

Sound BLASTER

PRO STUDIO

- SBX PRO STUDIO
- CRYSTALVOICE**
- SCOUT MODE
- SPEAKERS/HEADPHONES
- CINEMATIC
- MIXER
- EQUALIZER
- ADVANCED FEATURES

PROFILE **Sound BLASTER**

< CUSTOM >

Sound BLASTER

SBX Pro Studio

Surround

Crystalizer

Bass

Crossover Frequency

Smart Volume Normal Loud Night

Dialog Plus

Sound BLASTER

PRO STUDIO

- SBX PRO STUDIO
- CRYSTALVOICE**
- SCOUT MODE
- SPEAKERS/HEADPHONES
- CINEMATIC
- MIXER
- EQUALIZER
- ADVANCED FEATURES

PROFILE **Sound BLASTER**

< CUSTOM >

Select a recording device

Microphone Set as Windows default

Mic Recording Volume

Mic Boost

CrystalVoice

FX
 Neutral

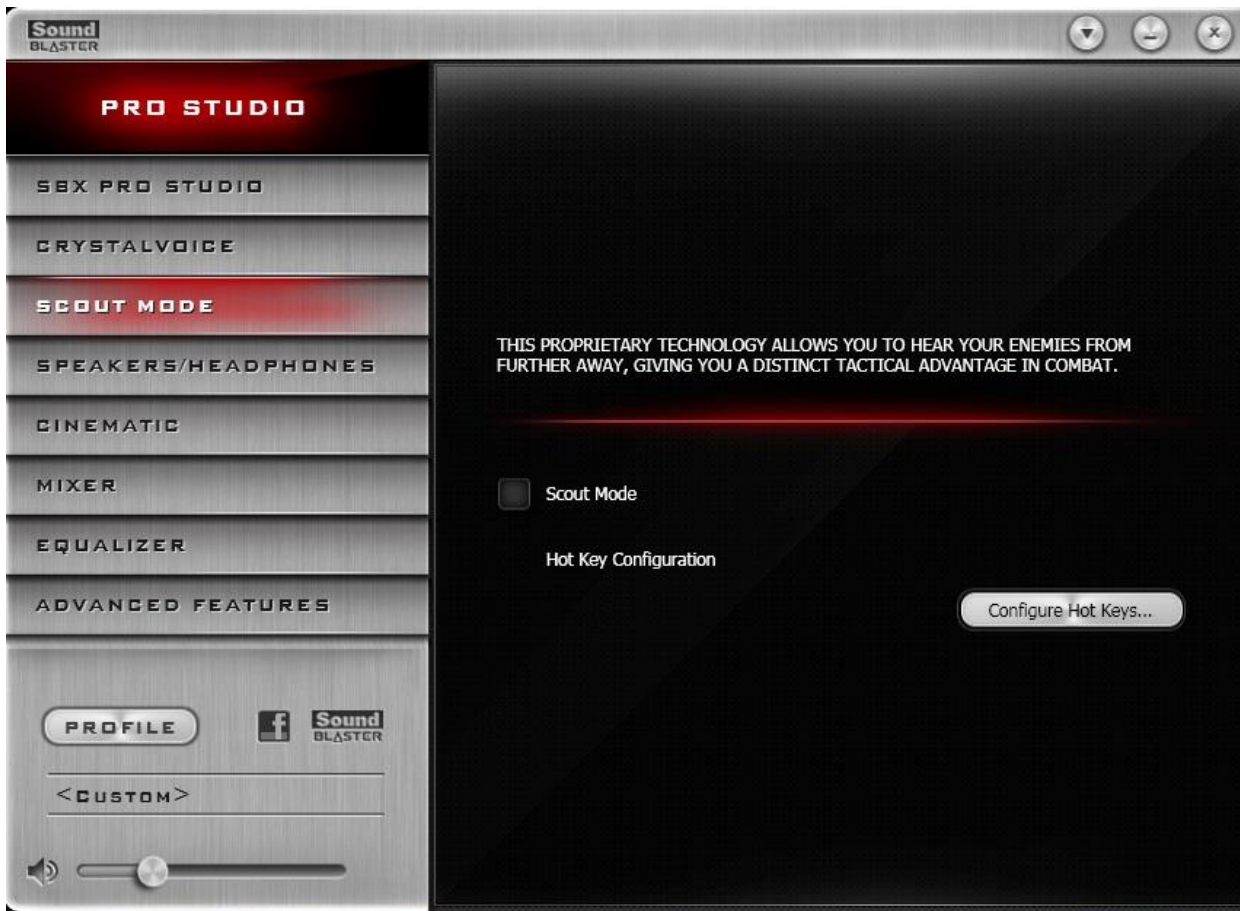
Smart Volume

Noise Reduction

Acoustic Echo Cancellation

Focus Wedge Angle Narrow Wide

Note: Only the selected microphone will have the CrystalVoice effect. Test



Sound BLASTER

PRO STUDIO

- SBX PRO STUDIO
- CRYSTALVOICE
- SCOUT MODE
- SPEAKERS/HEADPHONES
- CINEMATIC**
- MIXER
- EQUALIZER
- ADVANCED FEATURES

PROFILE **Sound BLASTER**

< CUSTOM >

Encoder

- No Encoder
- DOLBY DIGITAL LIVE**
- dts Connect**

DTS Connect™ includes DTS Neo:PC™ and DTS Interactive™ to give you DTS Digital Surround® on your PC. DTS Interactive will be enabled automatically whenever DTS Connect is selected.

 - DTS Neo:PC
 - Cinema mode
 - Music mode

Wide Narrow

Note:

The audio device "Digital Audio (S/PDIF) (Sound Blaster ZxR DBpro)" will be used exclusively for Dolby Digital Live and DTS Connect playback. This means that no other software (such as media player applications and games) can play directly to the audio device.

To enjoy Dolby Digital Live or DTS Connect, ensure that you select "Speakers (Sound Blaster ZxR)" as the default playback device in the Windows Sound Control Panel and (if applicable) in the settings of your applications and games.

Sound BLASTER

PRO STUDIO

- SBX PRO STUDIO
- CRYSTALVOICE
- SCOUT MODE
- SPEAKERS/HEADPHONES
- CINEMATIC
- MIXER**
- EQUALIZER
- ADVANCED FEATURES

PROFILE **Sound BLASTER**

< CUSTOM >

Playback

- Speakers
- Digital Audio (S/PDIF)

Recording

- Digital Audio (S/PDIF)
- Microphone
- Aux
- What U Hear

Balance

- L
- R
- C
- Sub
- RL
- RR

Sound BLASTER

PRO STUDIO

- SBX PRO STUDIO
- CRYSTALVOICE
- SCOUT MODE
- SPEAKERS/HEADPHONES
- CINEMATIC
- MIXER**
- EQUALIZER
- ADVANCED FEATURES

PROFILE Sound BLASTER

<CUSTOM>

Playback

- Speakers
- Digital Audio (S/PDIF)

Recording

- Digital Audio (S/PDIF)
- Microphone
- Aux
- What U Hear

Balance

- L
- R
- Listen to this device

Sound BLASTER

PRO STUDIO

- SBX PRO STUDIO
- CRYSTALVOICE
- SCOUT MODE
- SPEAKERS/HEADPHONES
- CINEMATIC
- MIXER
- EQUALIZER**
- ADVANCED FEATURES

PROFILE Sound BLASTER

<CUSTOM>

EQ

Rock

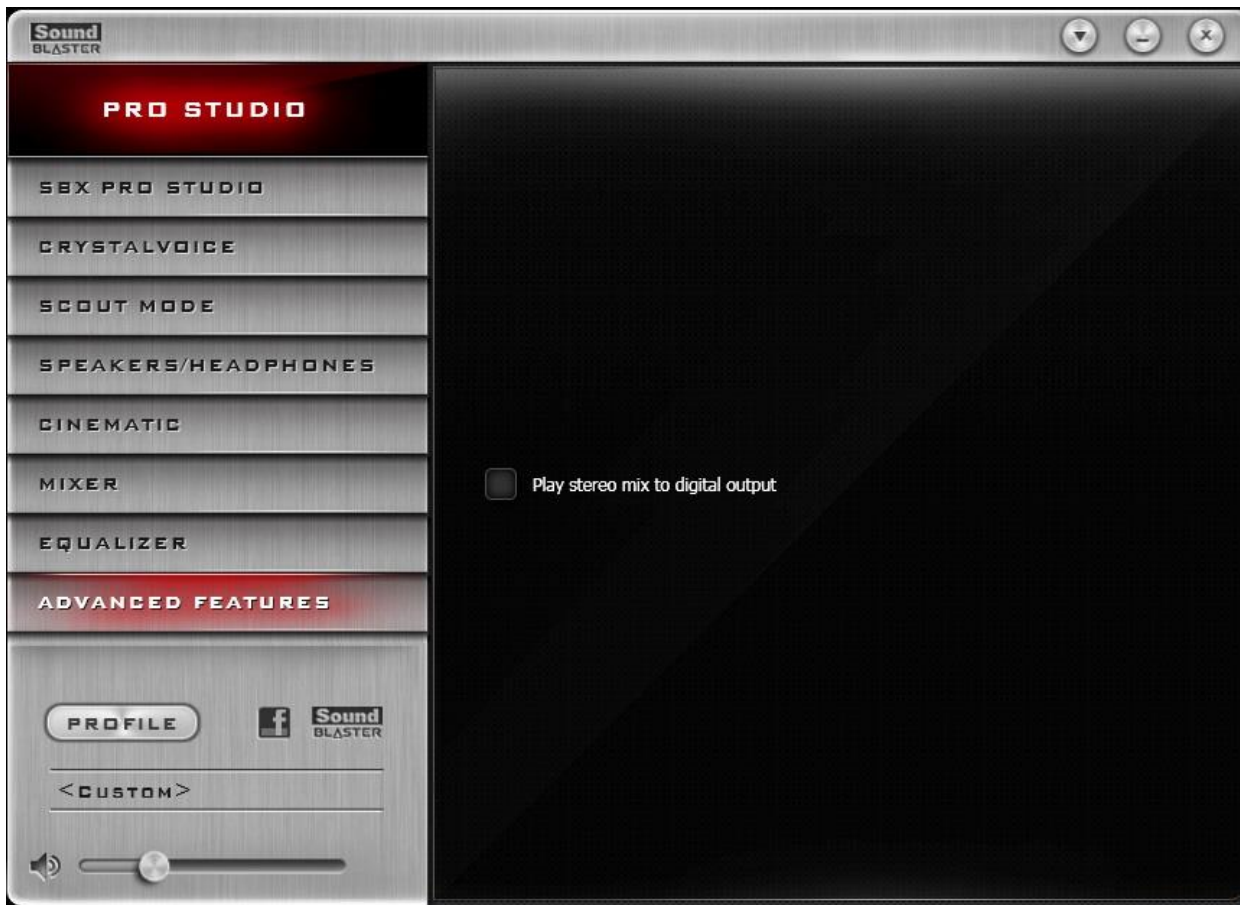
Save Delete

24dB 12dB

0dB

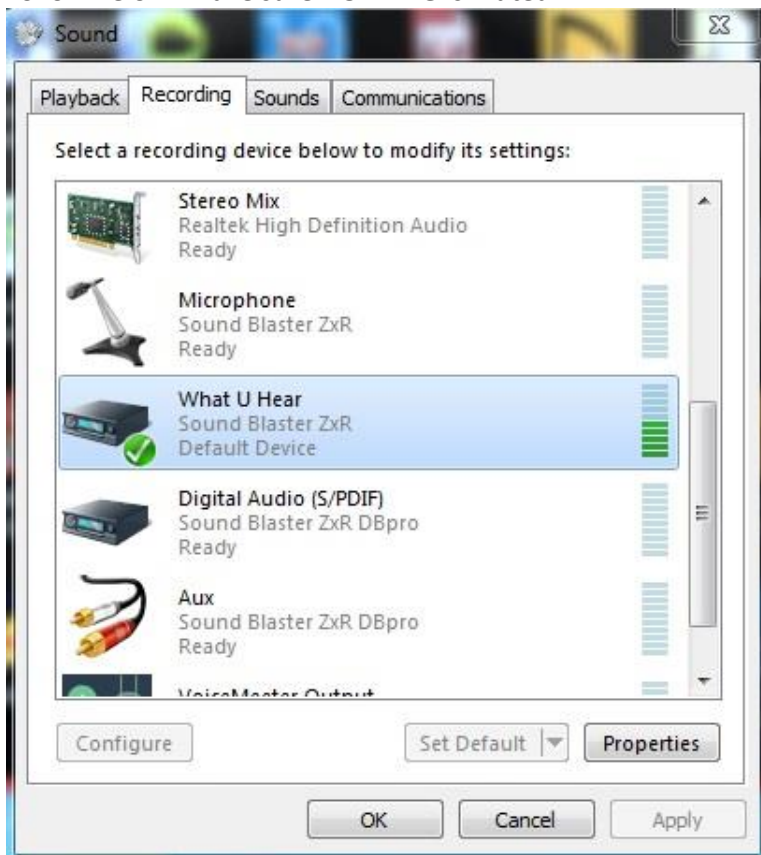
-24dB -12dB

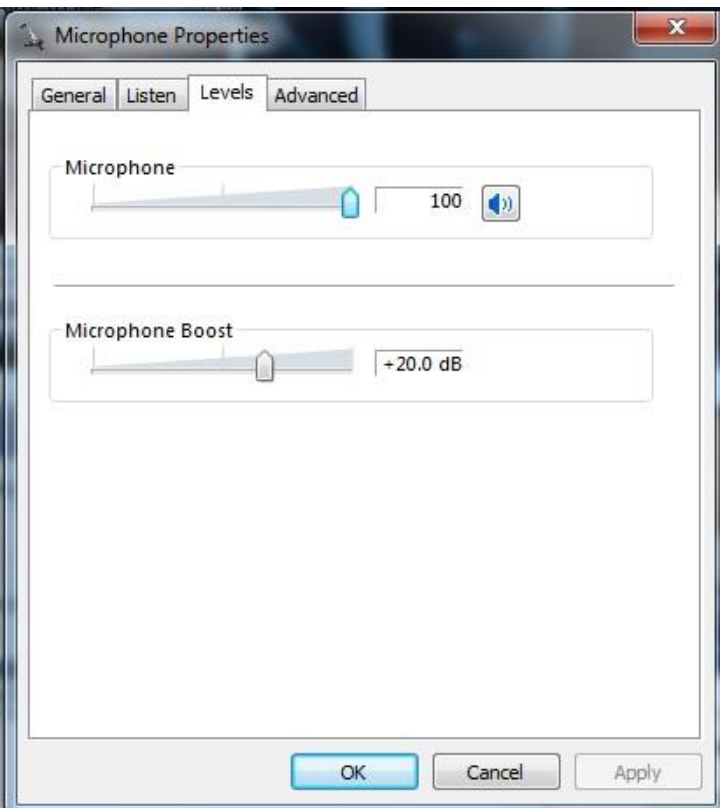
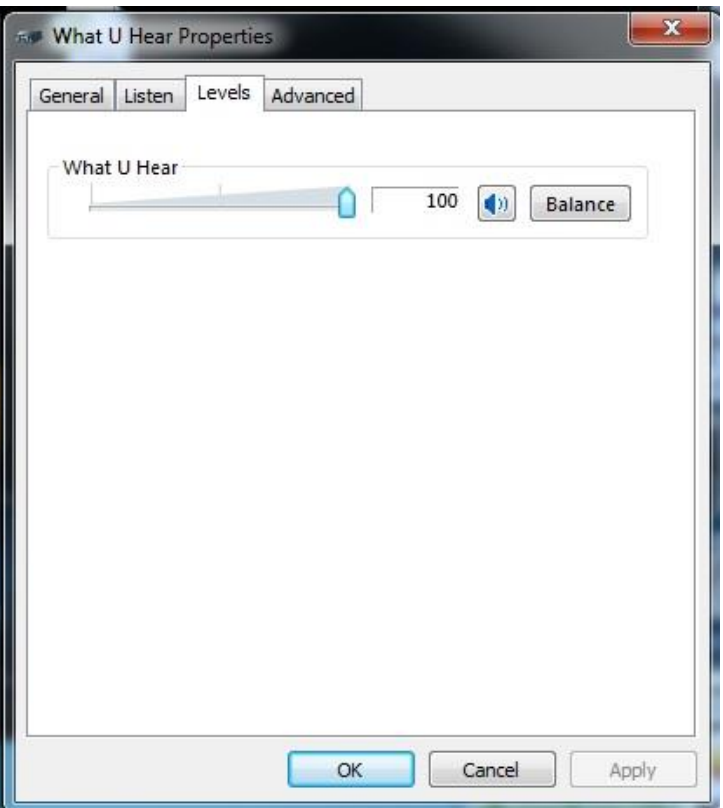
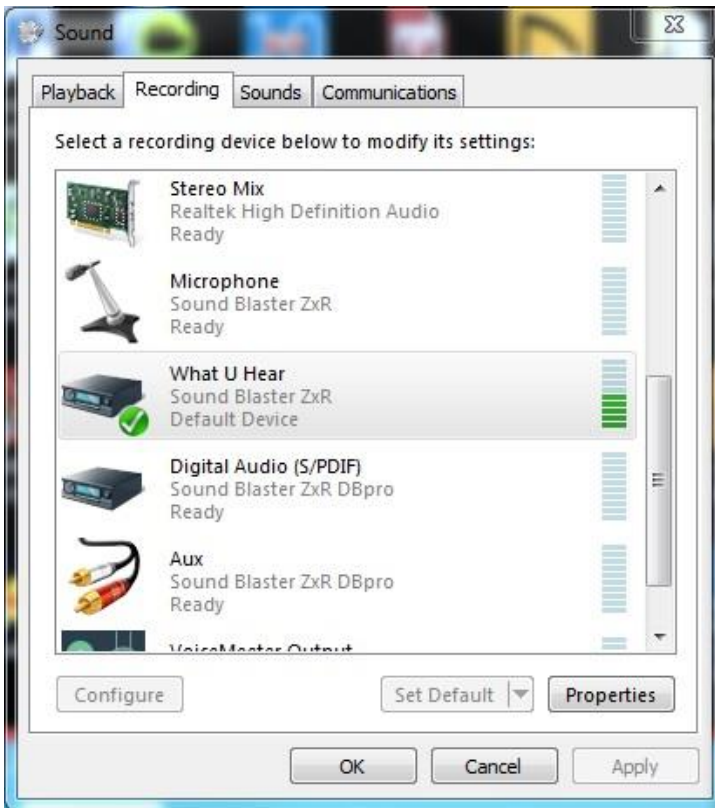
31 62 125 250 500 1k 2k 4k 8k 16k LEVEL



Open Sound Settings by Right Click the Speaker in the R corner of your desktop. Click Recording devices

Follow Below- Make sure NOTHING is muted






Sound

Playback | Recording | Sounds | Communications

Select a playback device below to modify its settings:

-  **S27D590-C**
NVIDIA High Definition Audio
Ready
-  **Speakers**
Realtek High Definition Audio
Ready
-  **Speakers**
Sound Blaster ZxR
Default Device
-  **Digital Audio (S/PDIF)**
Sound Blaster ZxR DBpro
Ready
-  **VoiceMeeter Input**
VB-Audio VoiceMeeter VAIO
Ready



Configure Set Default ▾ Properties

OK Cancel Apply

Speakers Properties

General | Levels | Advanced

Speaker/Headphone

 24  Balance

OK Cancel Apply